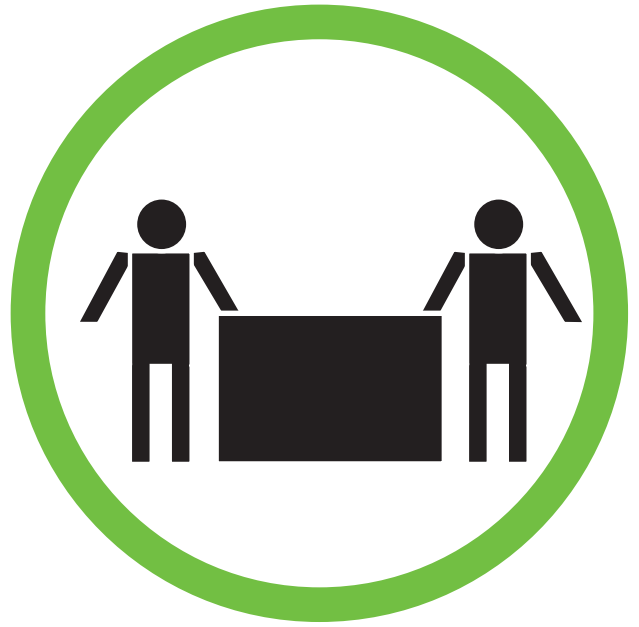


CC050-Hanging Installation Instruction

Please be sure to use a manual screwdriver and refrain from using an electric drill.



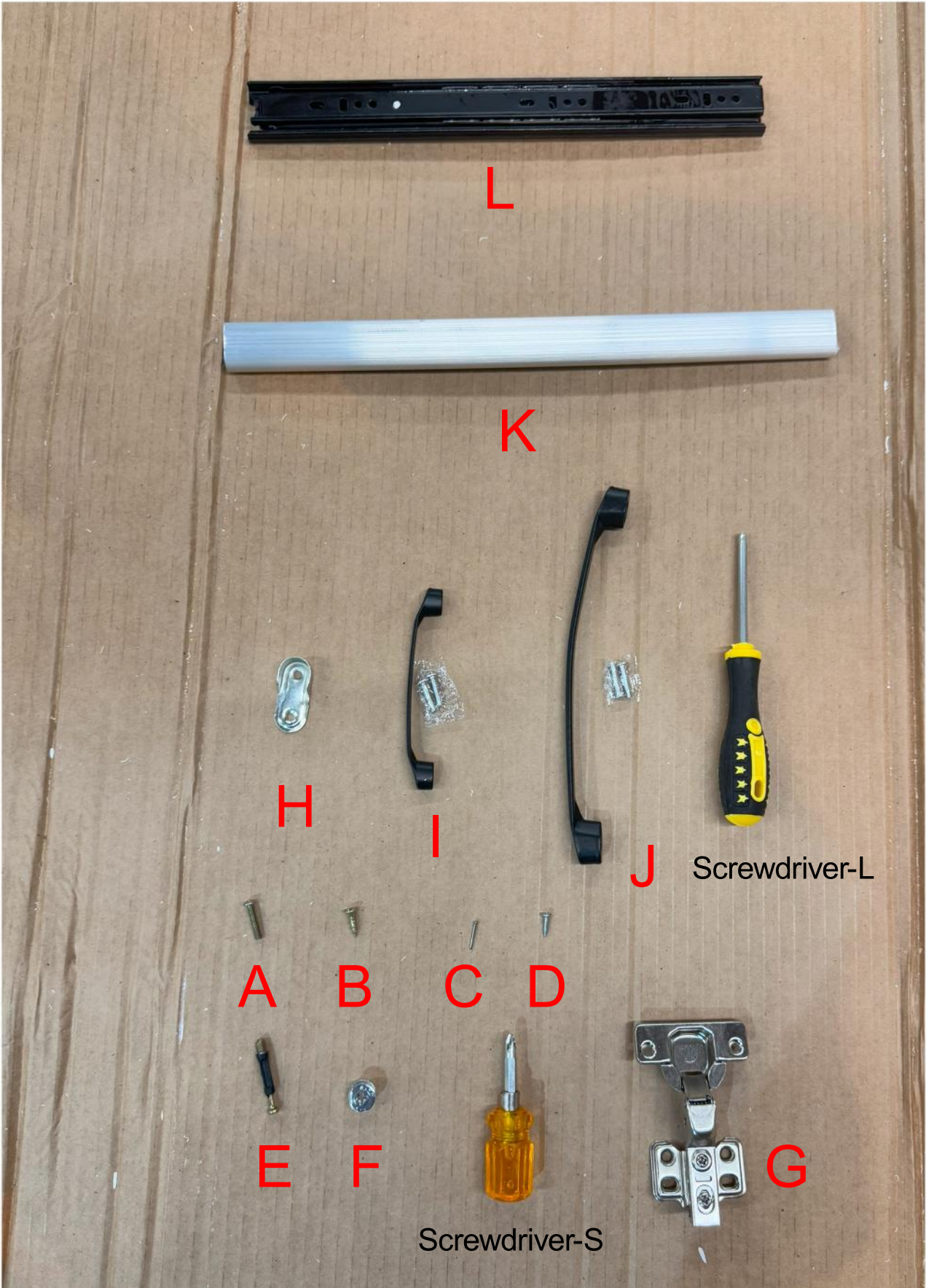
CAUTION



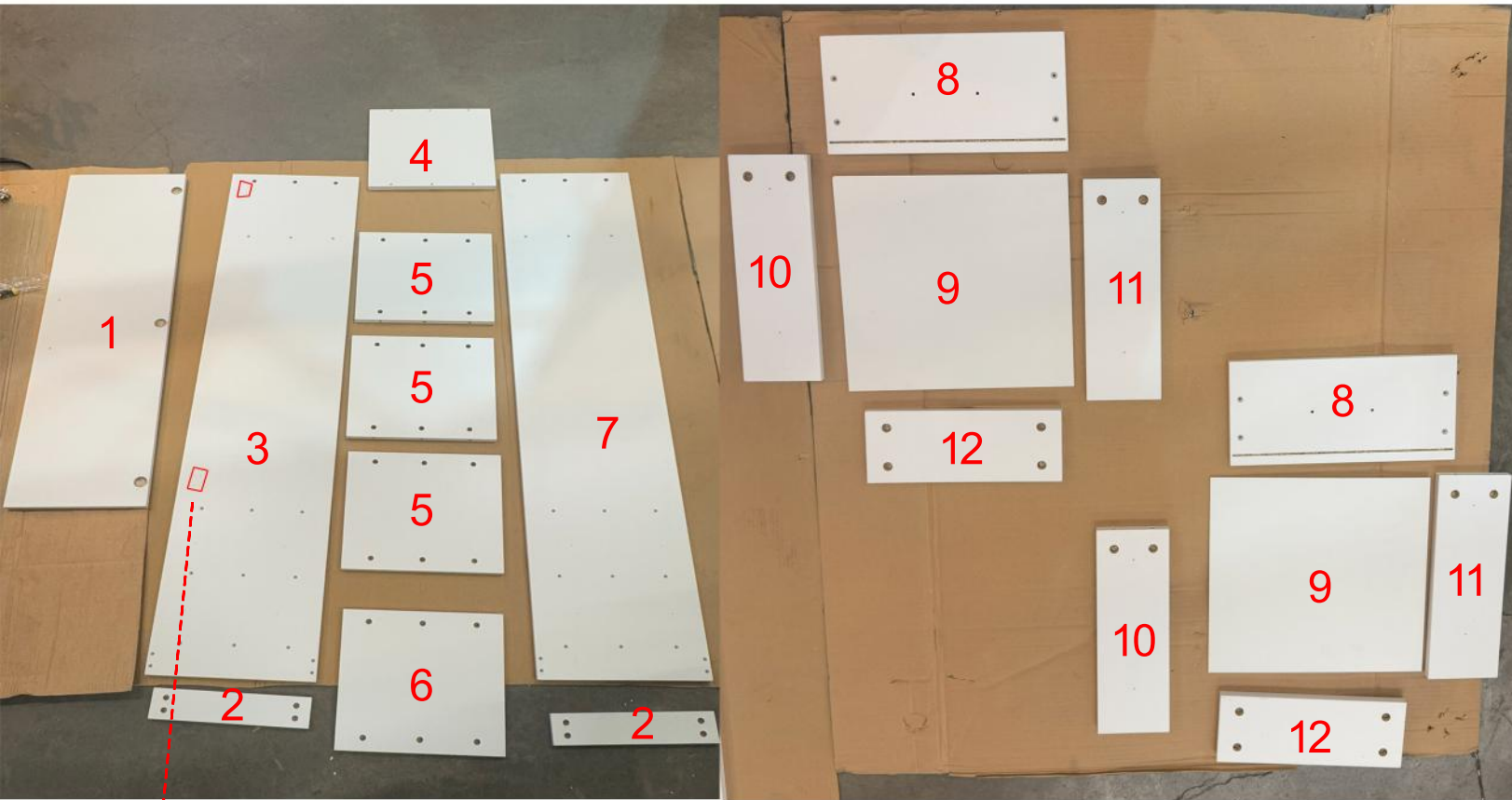
TWO PERSONS LIFT & INSTALLATION

Important: This product is oversized and heavy. For safe assembly and to avoid damage, at least two people are required. When flipping or moving the item, always lift carefully. Never drag, drop, or handle it roughly.

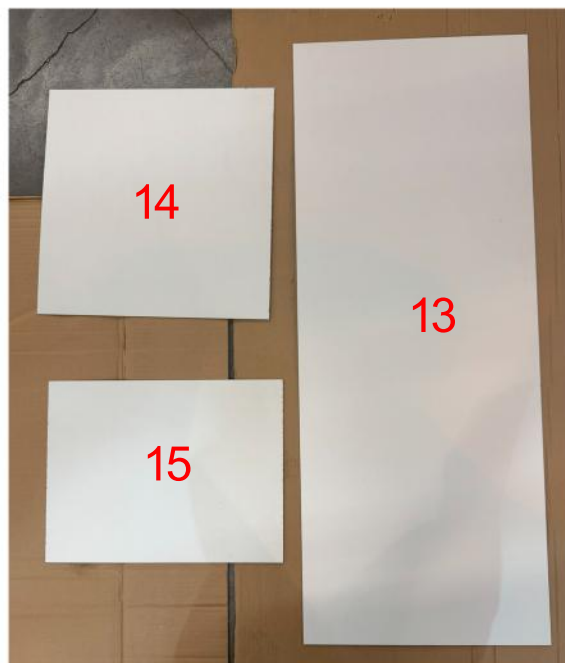
Parts List



Panel List

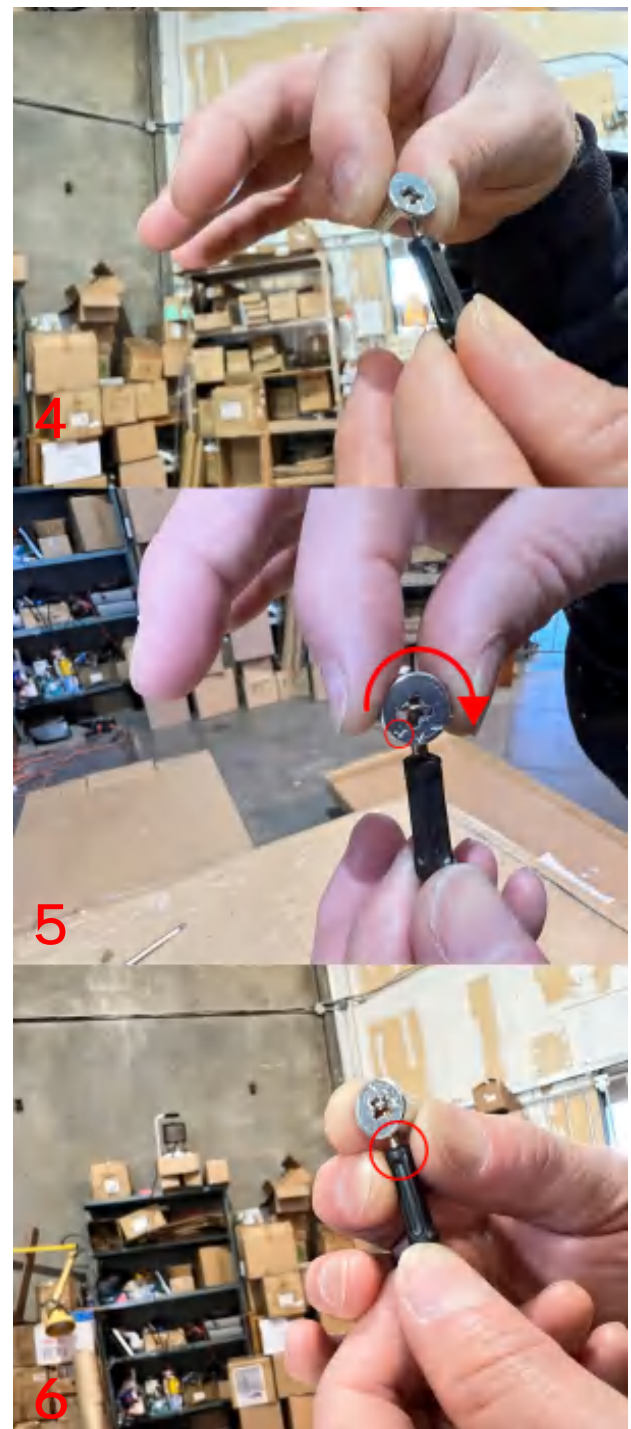
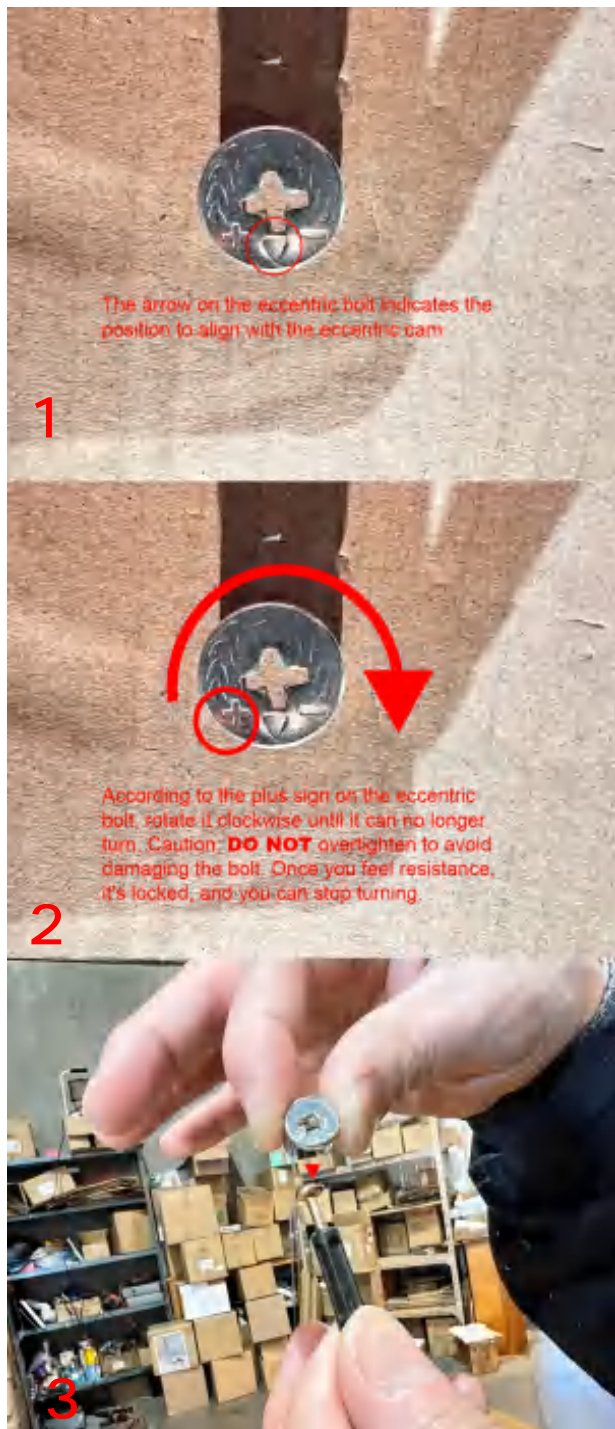


Please note that the left side of **Panel 3** has **two sets of four** pre-drilled holes

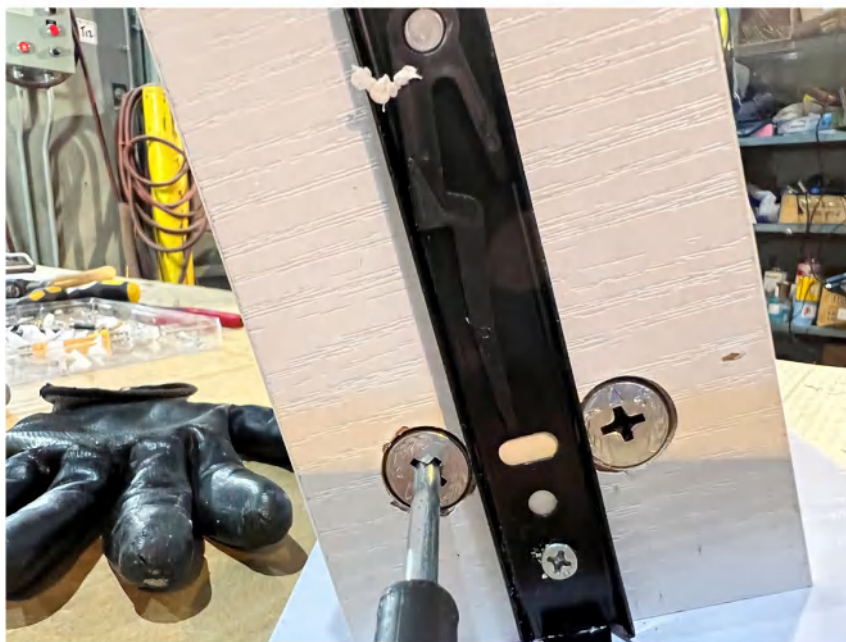
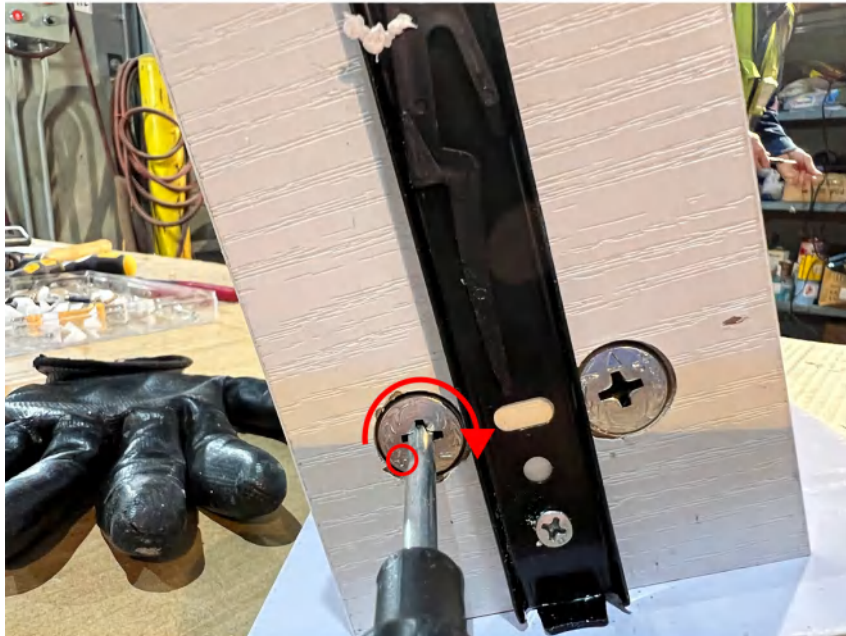


Please note that **Panel 6** is slightly shorter than **Panel 5**.

Instructions for using eccentric bolts



Example



Preparation Instructions for Using the Sliding Rail:









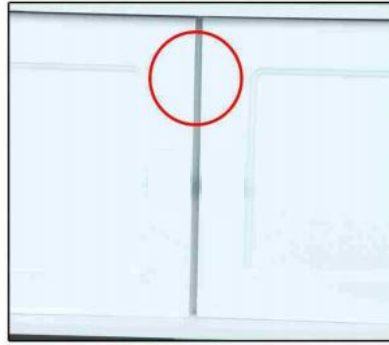
The Main Bod Part

This image shows two black metal drawer slides. The top slide, labeled 'The Main Bod Part', is a long, narrow metal track with a silver-colored roller at one end and a black plastic pull-out mechanism at the other. The bottom slide, labeled 'The Pull-Out Part', is a shorter, narrower metal track with a black plastic pull-out mechanism at one end. Both slides are resting on a white surface, with a brown cardboard box visible in the background.

The Pull-Out Part

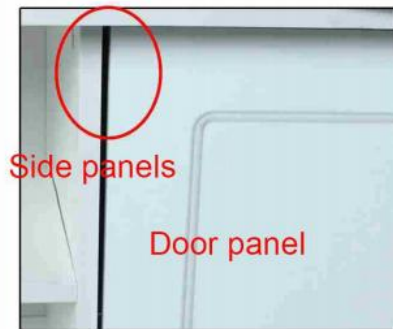
Door Panel Adjustment

Door gap
is too big



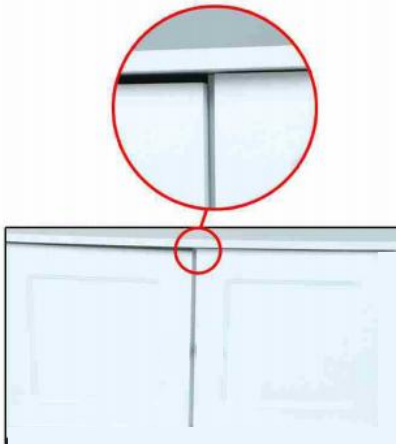
As shown in the picture, the screw that the screwdriver points to is used to adjust the door panel to move left and right, and turning it clockwise is to adjust the door panel to move toward the center.

The gap between
the door panel
and the side panel
is too large



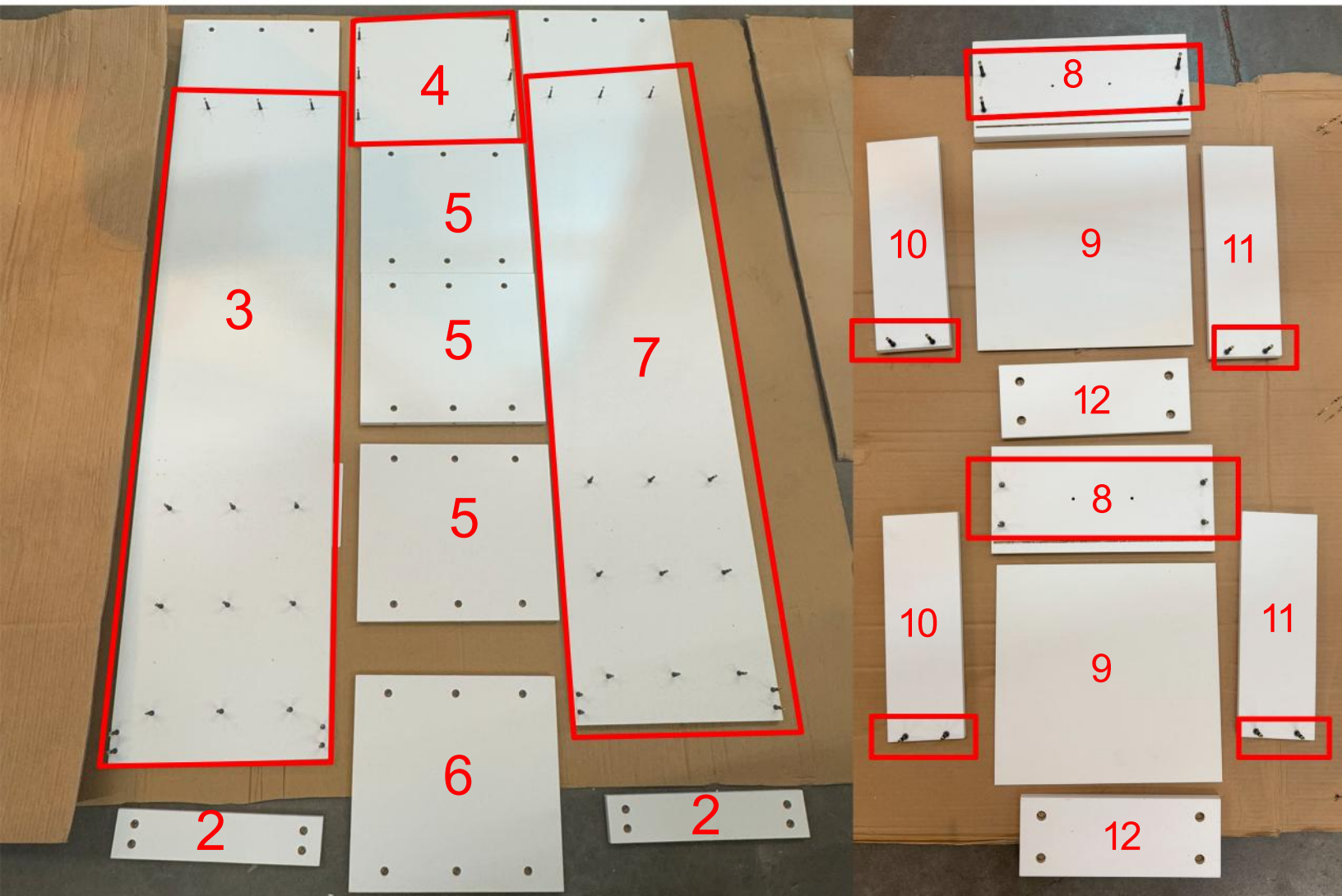
As shown in the figure, loosen the screw that the screwdriver points to, push the door panel in or pull it out, and then tighten it to solve the above problem.

Uneven
door panel



As shown in the figure, loosen the screw that the screwdriver points to, push the lower door panel and hinge upward, and then tighten the screw. Push the upper door panel and hinge downward, and then tighten the screw.

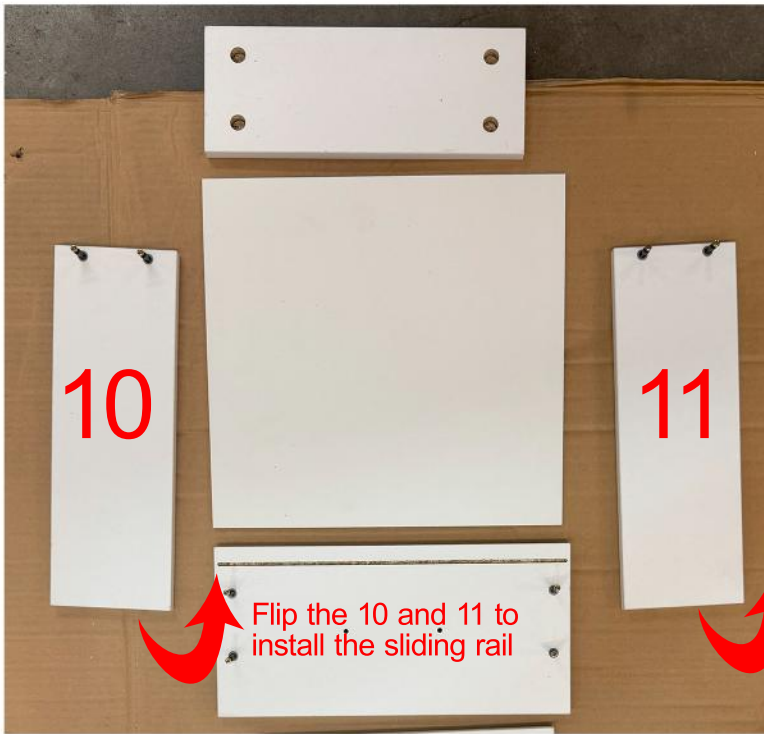
Step 1



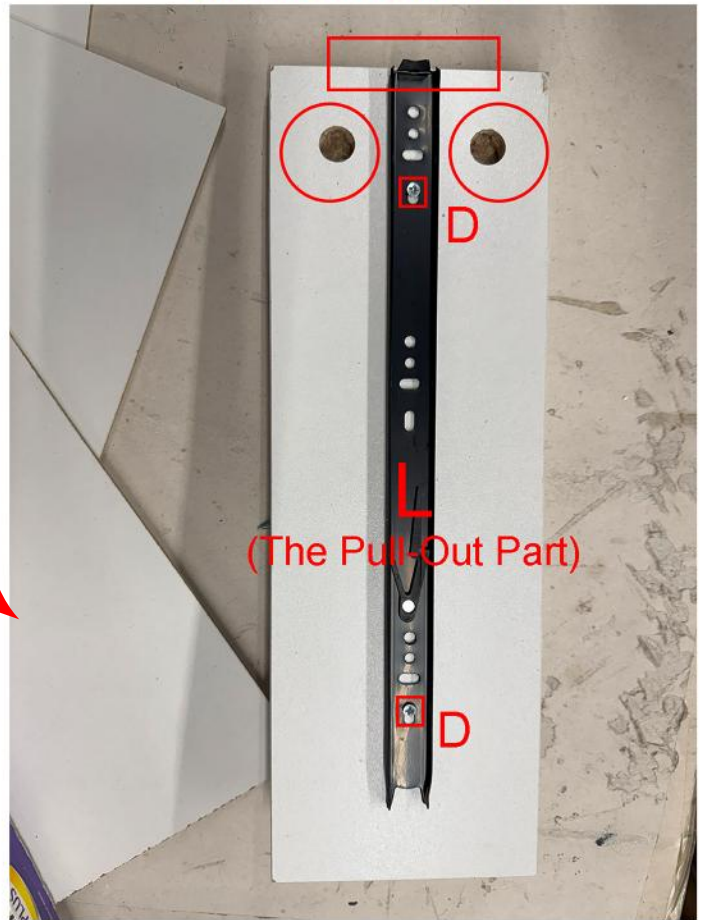
Install E in 3,4,7,8,10,and 11 with pre-drilled holes for runbber rings. Take care not to overtighten during installation, and ensure the screws are inserted vertically downward without tilting.

Step 2

Align the drawer's sliding section with the stopper to the edge, ensuring the installation direction is correct.



For the usage of the sliding rail, please refer to the initial **Instructions for Using the Sliding Rail**.



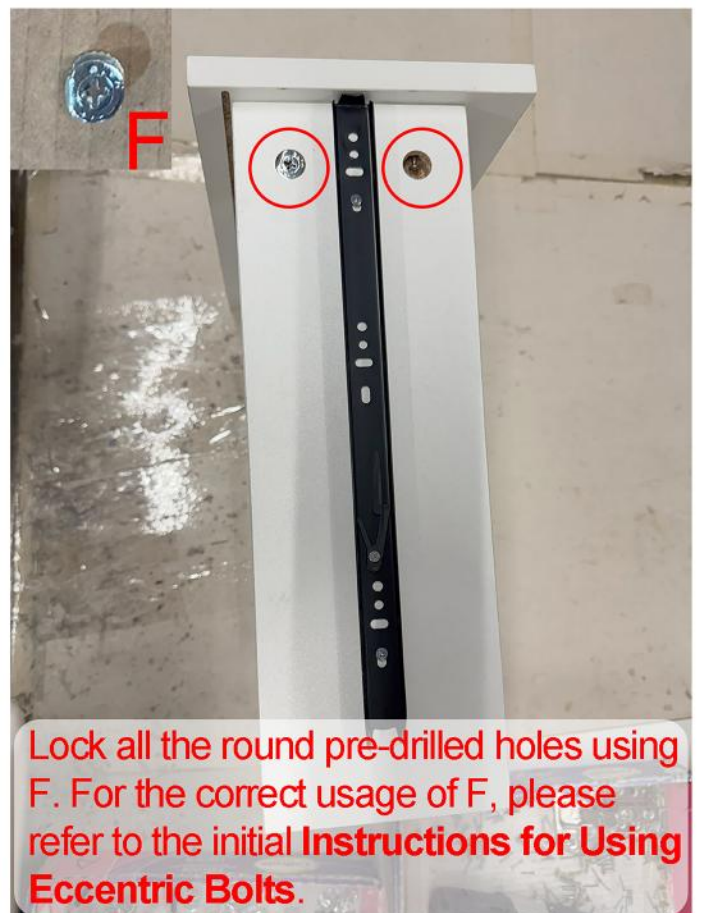
Please note that Panels 10 and 11 must be flipped so that the round pre-drilled hole side is facing outward. Use D to install L.



Step 3

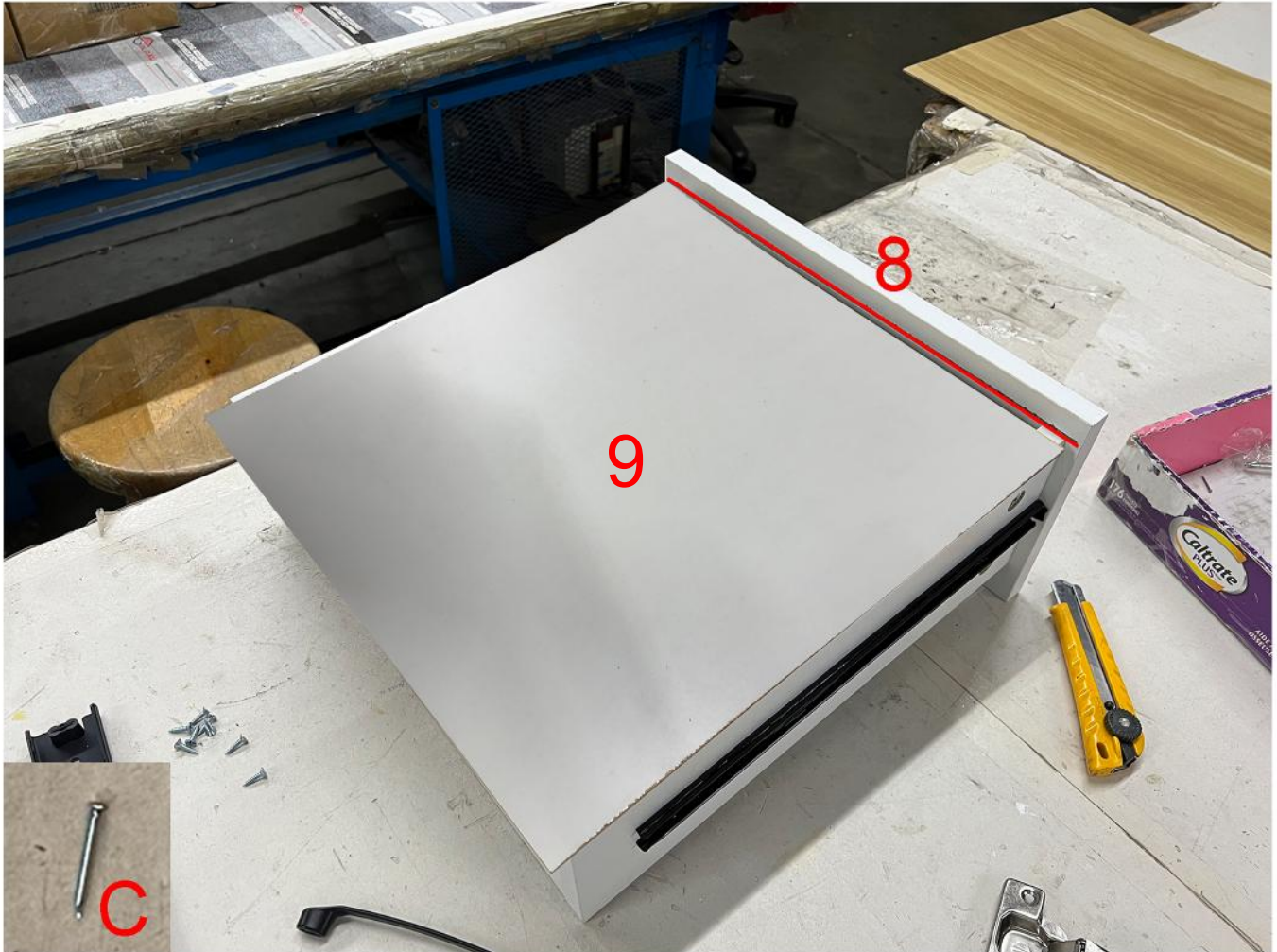


Ensure that each panel is fully joined with no gaps between them.



Lock all the round pre-drilled holes using F. For the correct usage of F, please refer to the initial **Instructions for Using Eccentric Bolts**.

Step 4



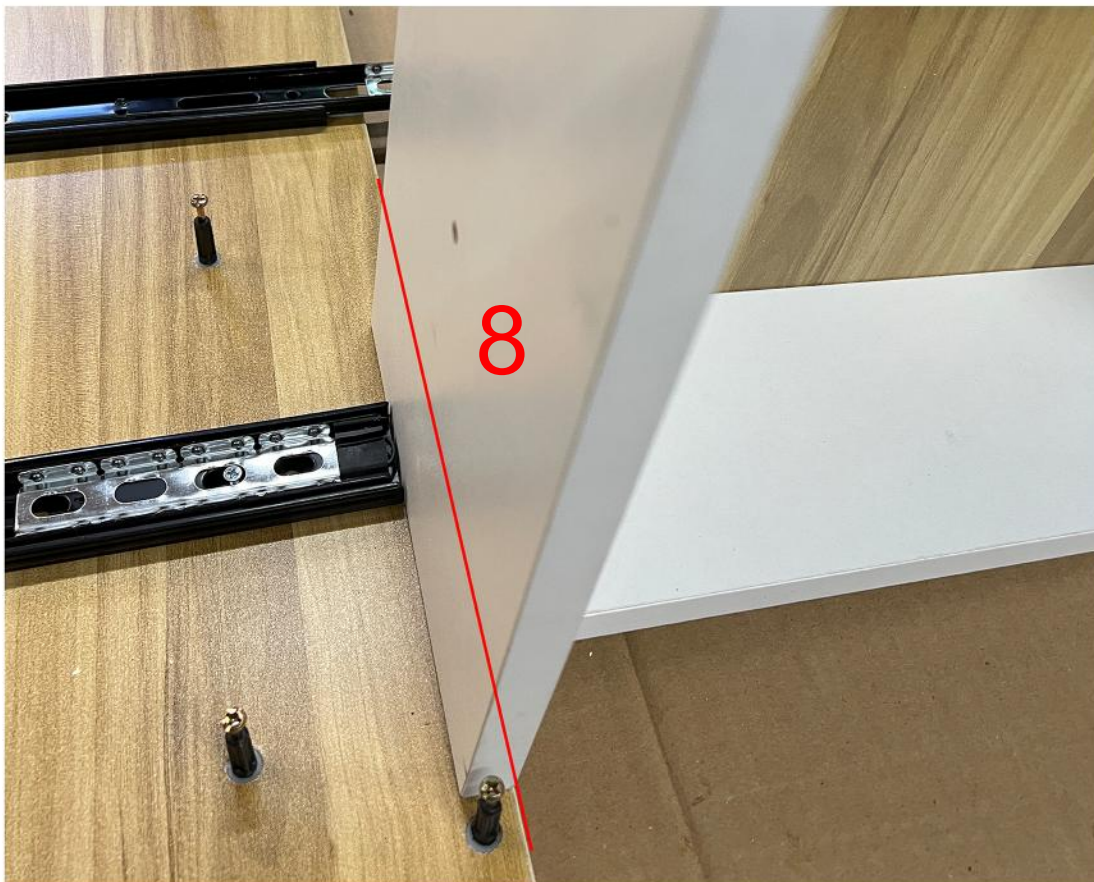
Insert Panel 9 into the groove of Panel 8 and secure it using C.



Step 5

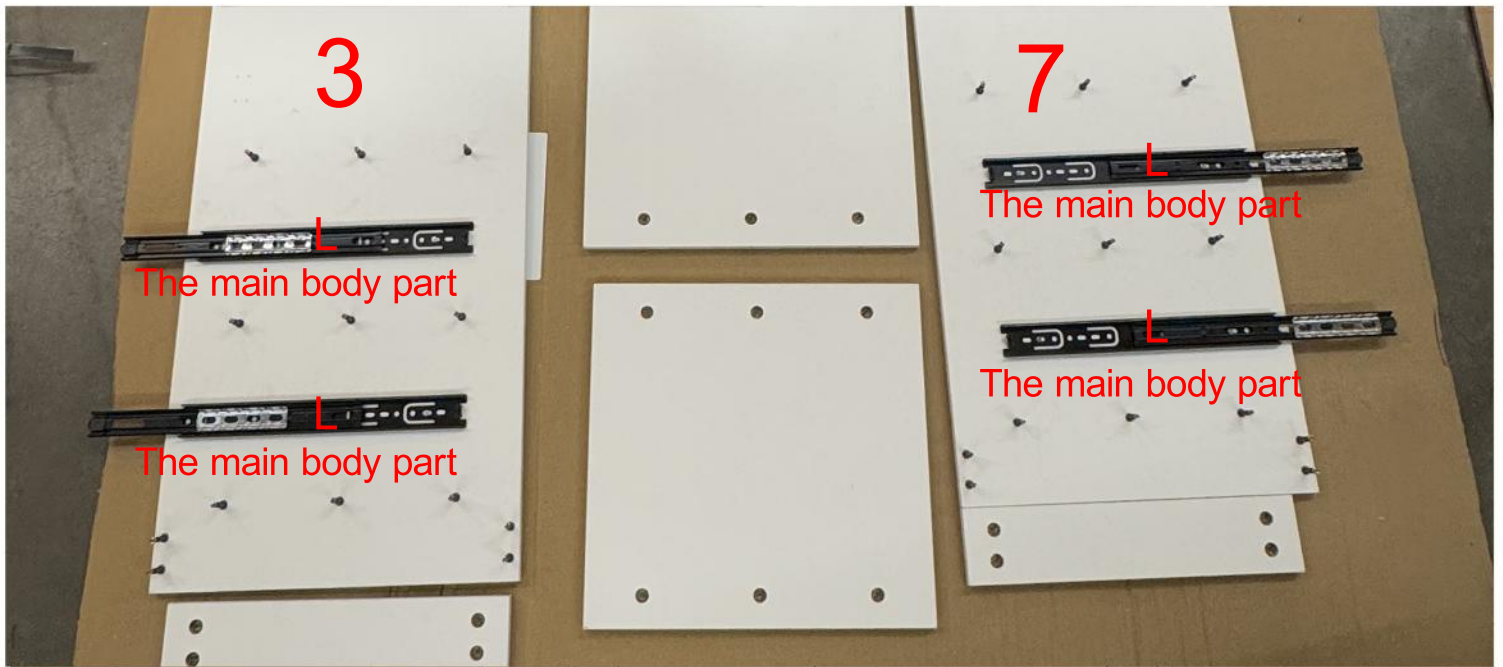


Align the slide rails with the small pre-drilled holes.
Position the rails approximately 17mm from the side.

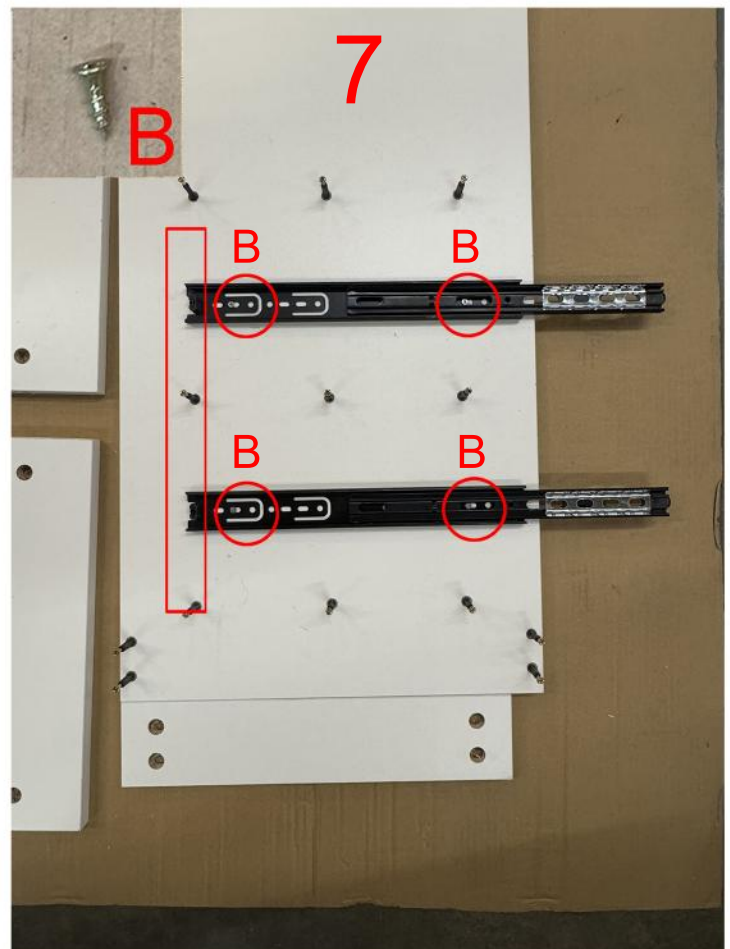
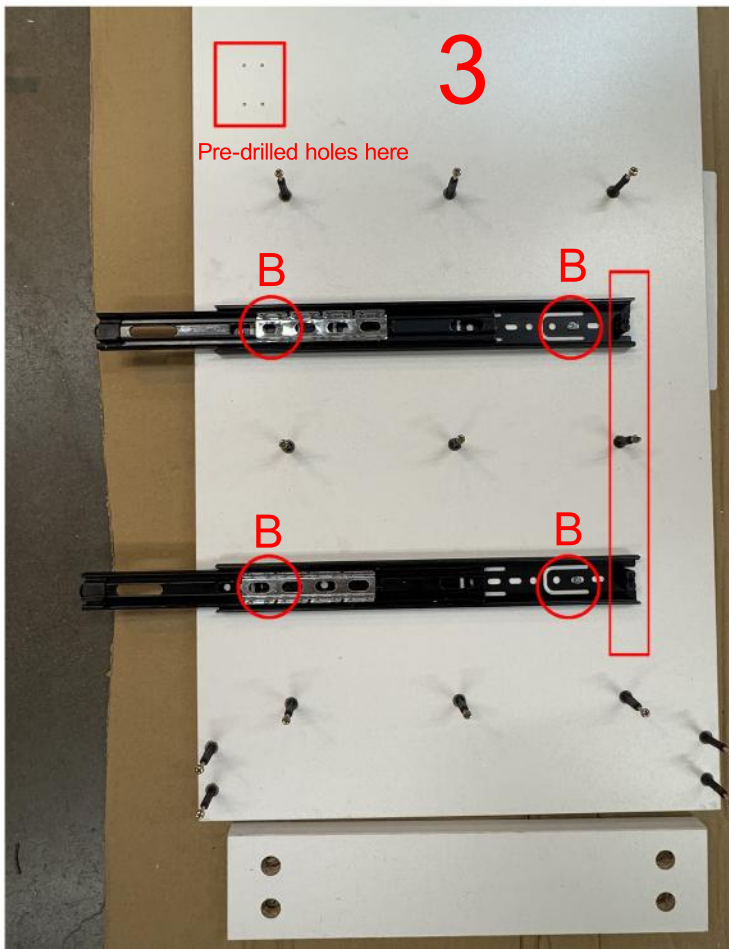


Use Panel 8 to double check the distance of L, ensuring the drawer can close perfectly.

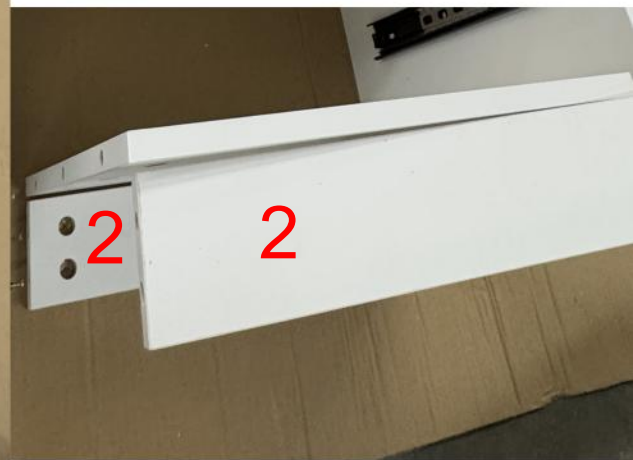
Step 6



Pay attention to the direction of the sliding rails, ensuring the end with the stopper faces backward. Align the two sliding rails and use B to secure them to the pre-drilled holes. Refer to the marked positions in the diagram for guidance. Ensure the positions of the left and right sliding rails are as parallel as possible.

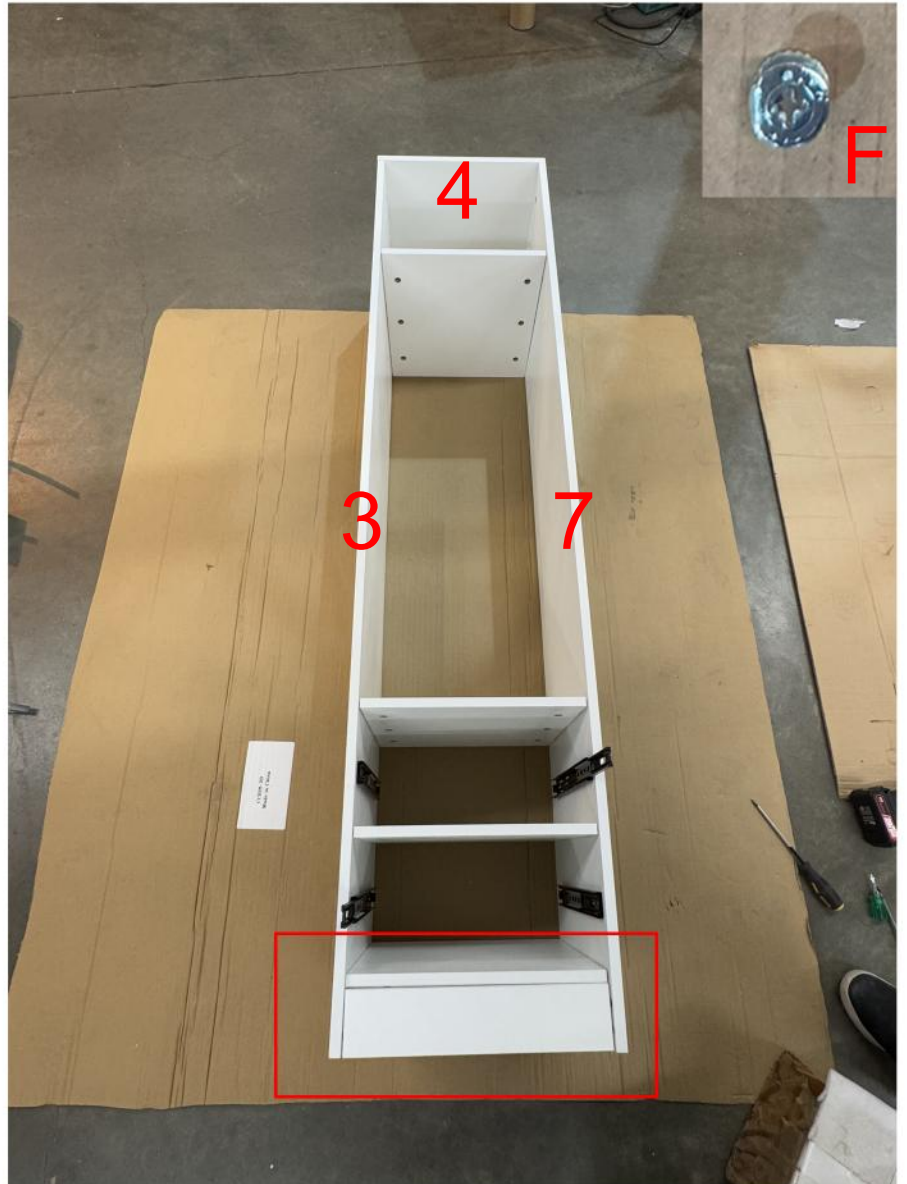


Step 7



When installing Panel 2, make sure the round pre-drilled holes face inward, towards each other.

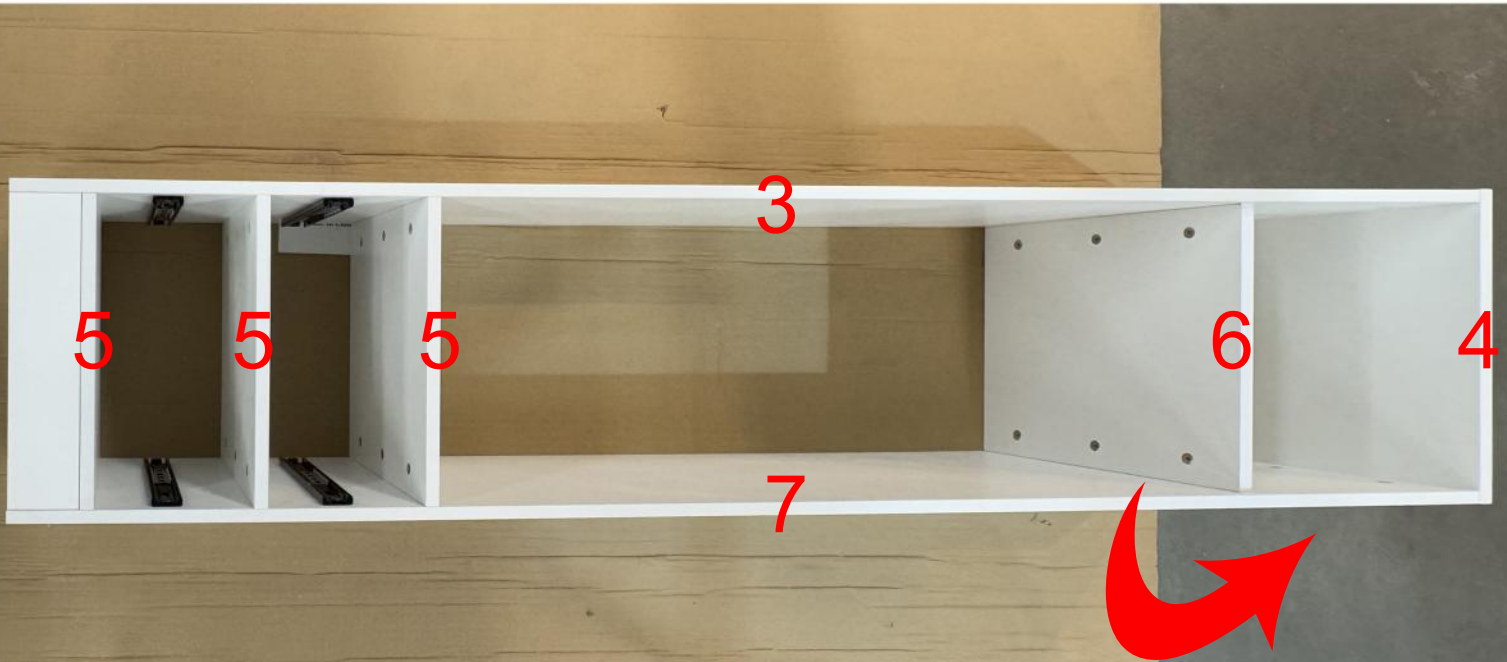
Step 8



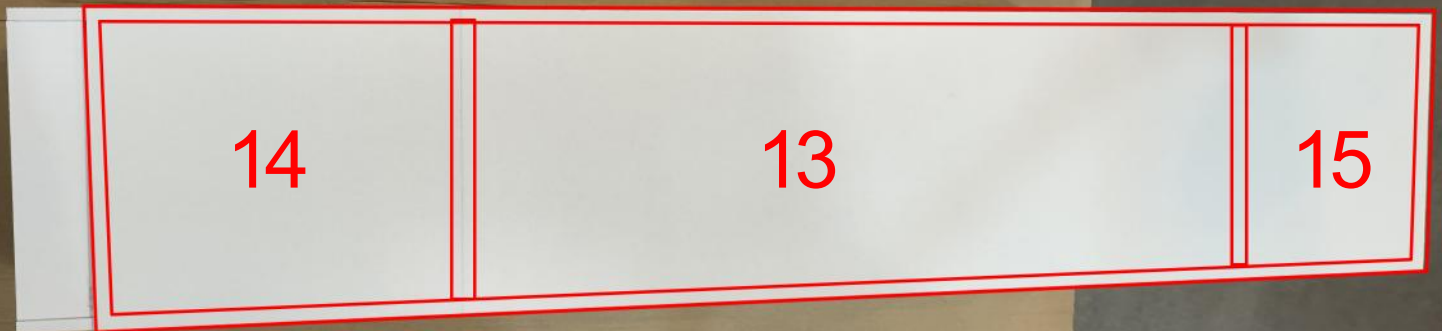
After joining Panels 3 and 4, use F to securely tighten all the round pre-drilled holes. Don't forget the cabinet top and bottom.

Step 9

Make sure that all the Panel 5, 6 and 4 do not extend beyond the side panels 3 and 7.



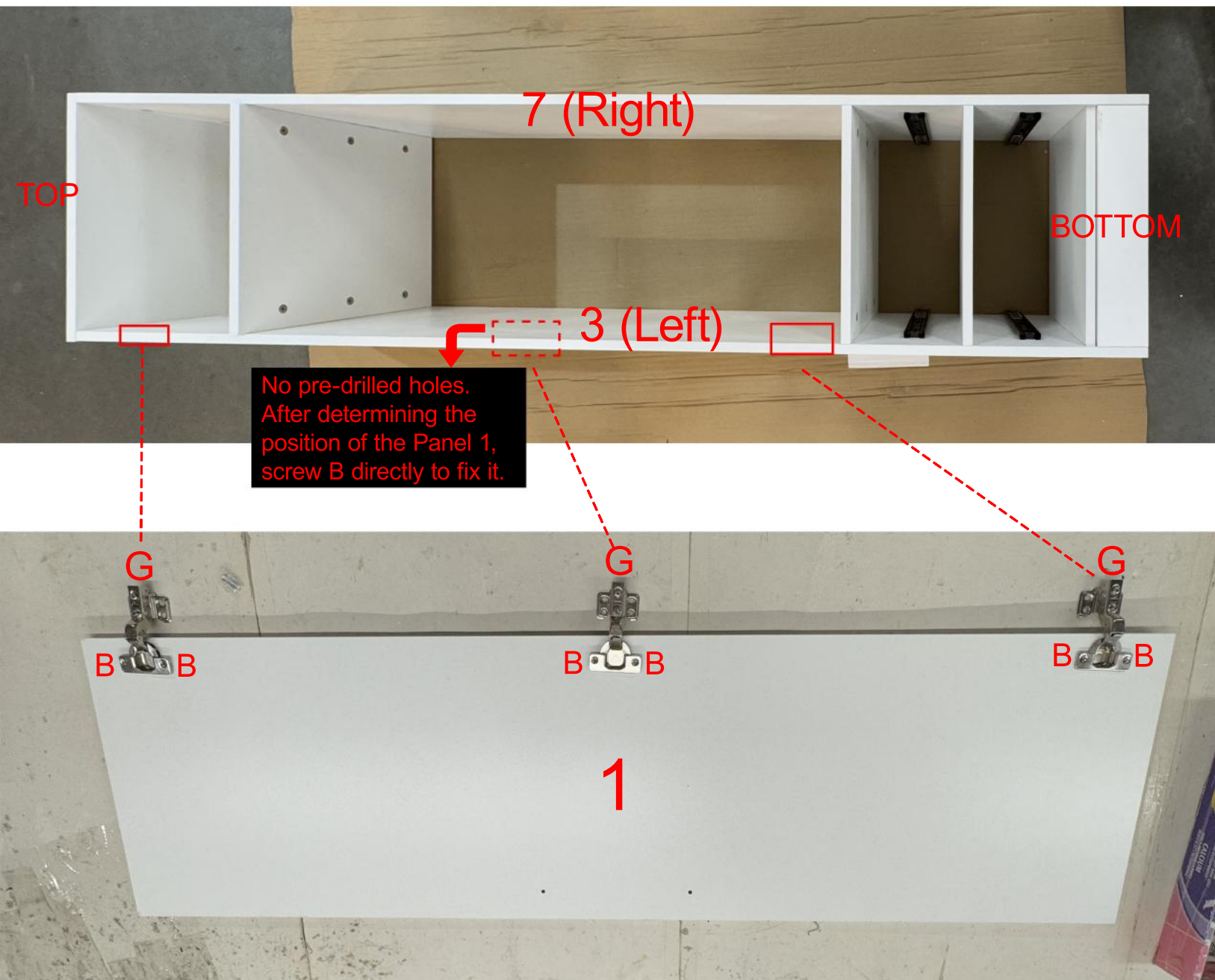
Flip the cabinet with the back facing up, and place Panels 13, 14, and 15 on top. Use C to secure them to the frame.



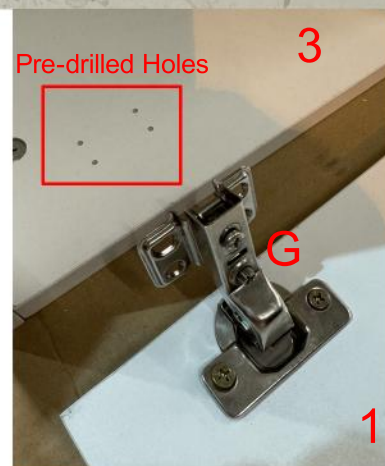
BOTTOM

TOP

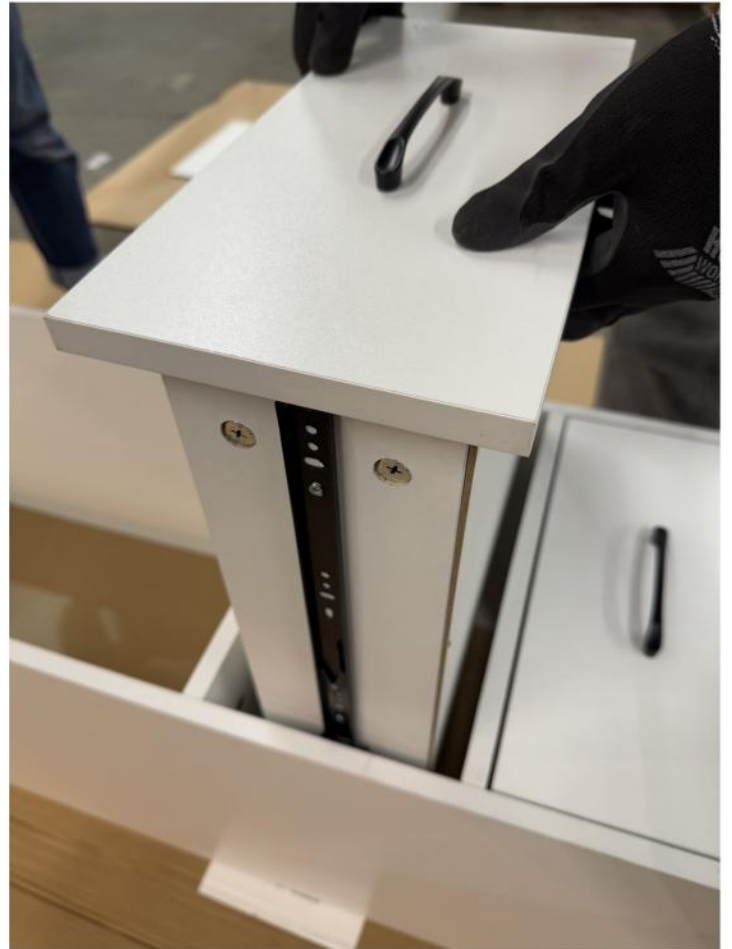
Step 10



Align the other end of G on Panel 1 with the pre-drilled holes on Panel 3 and secure it using B. For adjusting the door gap, please refer to the initial Instruction for Door Panel Adjustment.



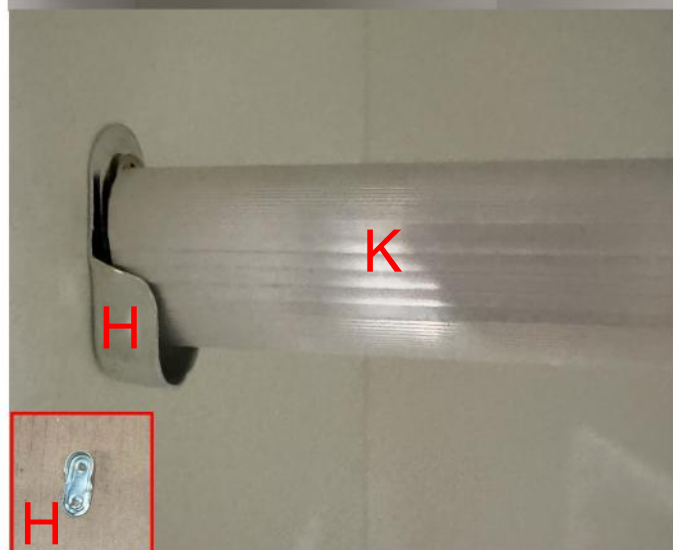
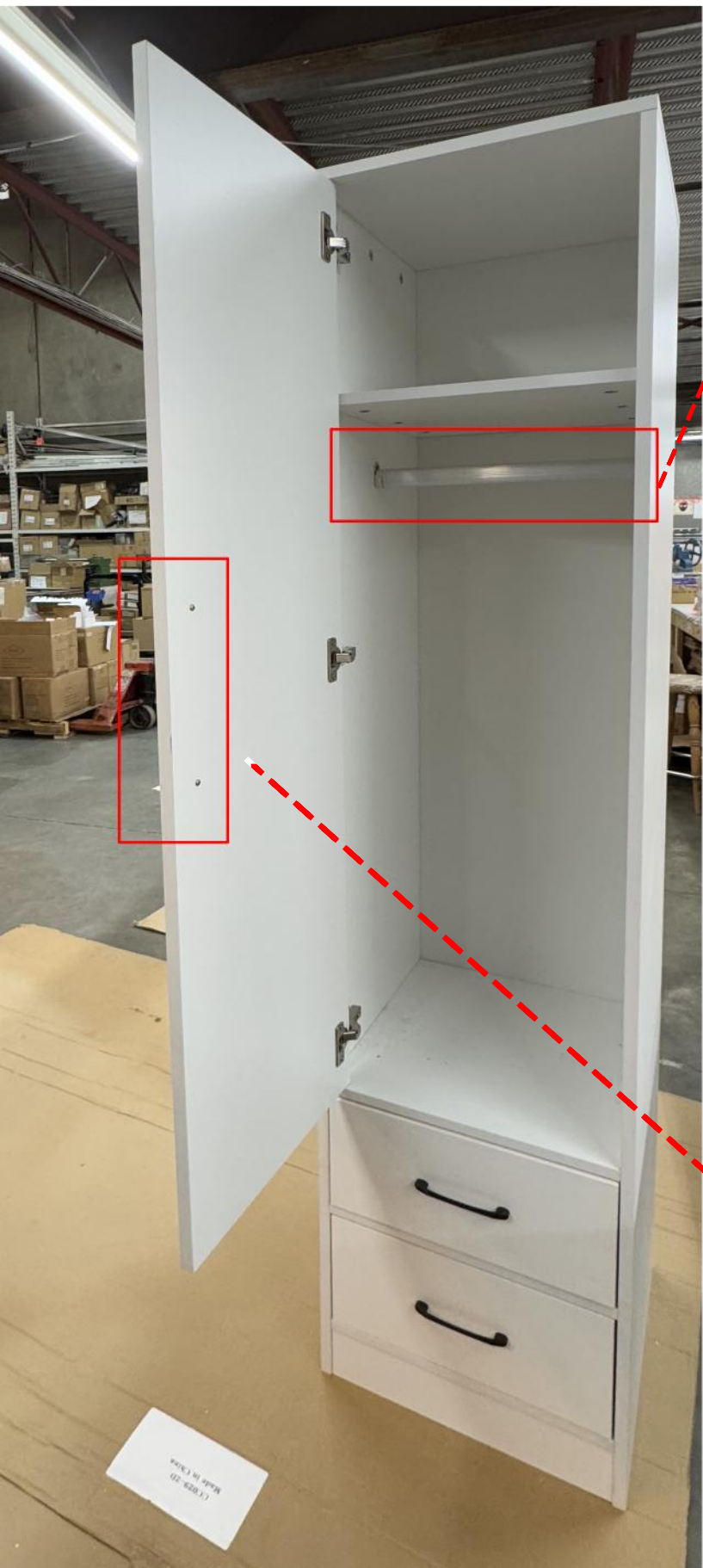
Step 11



Insert the pull-out part of the sliding rail back into the main body part. Ensure both sides are properly aligned.



Step 12



Installation Complete

